



# 2018 ANNUAL REPORT

**NEW HOPE**   
Center for Grief Support

---

[www.newhopecenter.net](http://www.newhopecenter.net)  
[griefhelp@newhopecenter.net](mailto:griefhelp@newhopecenter.net)  
248-348-0115

## MISSION

Bringing Hope, Healing, and New Beginnings to adults and children grieving the death of a loved one

## VISION

To see those who've come through our program create a safe, understanding community for others in grief and help change the way our culture responds to grief and loss.

If 2017 was a year of change at New Hope Center for Grief Support, 2018 was a year of growth! As Chairman of the Board, I'm pleased to share the exciting growth our organization is experiencing.

In 2018 we had record attendance at numerous programs, including our fall eight-week workshop (120 adults), annual summer kids camp (35 kids), summer half-day seminar (45 adults), and holiday memorial seminar (90 adults). We also saw tremendous attendance increases in our ongoing support groups. These are important measures for us, because we exist to serve the community and this is evidence that there is both a need for our service and an appreciation for the way we do it. None of this would be possible without the tireless leadership of our Executive Director Rick Guttersohn, our staff and the dozens of volunteers who help us deliver the message of hope to those experiencing grief.

Speaking of growth, we expanded our footprint in Northville, when we added the seminar and support rooms, which effectively doubled our square footage. This was a carefully considered expansion because we wanted to ensure that we could use it effectively and sustain the increased costs. Already there have been numerous individual and family meetings along with weekly and monthly support groups. We will be able to conduct small seminars and trainings in this space to fill the gaps between our seasonal programs. The conference room has also proven to be a great place for volunteers to get together and plan events and 'FUN'raisers.

I believe that our results in 2018 validate the direction New Hope is on and the service model that we employ. In doing so, I believe New Hope is living up to the hopes and dreams of our founders, Cathy Clough and John and Betty Baird.

Sincerely,  
Steve Rowley  
Board Chairman



## STAFF

Rick Guttersohn, LLMSW – Executive Director  
 Mary Kraft, CCLS – Program Director  
 Valerie Brda – Office Administrator  
 Jennifer Frush – Outreach & Event Coordinator



## BOARD OF DIRECTORS

Steve Rowley - Board Chairman  
 Debbie Damesworth - Corporate Secretary  
 Jim Pilat - Corporate Treasurer  
 Beth Voyles  
 Tom Krause  
 Alan Walthall  
 Sylvia Arakelian  
 Bob Kalec

## ADVISORY COMMITTEE

Chip DeClue  
 Ed Doody  
 Maryellen Lewandowski  
 Cathy Clough - Founder & Executive Director Emeritus  
 John Baird - Founding Board Chairman

## INCREASING OUR IMPACT!

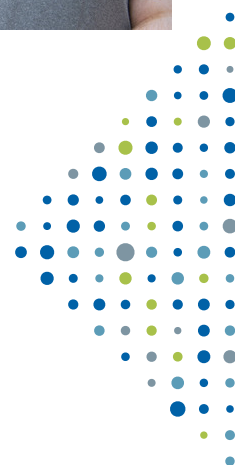
2018 was an incredible journey of growth! At the end of 2017, we asked if people would help us raise funds above and beyond our budget to invest in capacity growth to keep up with the increasing number of people reaching out for support. And you responded, helping us raise an additional \$40,000 to help us serve even more people!

This surplus allowed us to add two new staff members, double our facility space, added new technology systems, and set record attendance at almost every program we held! By the end of the year, we supported on average nearly 100 people every week through our workshops, seminars, peer support groups, and outreach efforts. This was only possible because of your generosity, and I want to express how grateful I am! You have continued to express your support of our vision and offered words of encouragement as our team navigates the challenges that come with growth. Thank you for all that you do!

I also want to share a special thank you to Mary Kraft for her service with New Hope in 2017 and 2018. While Mary's compassion, warmth, and friendship is missed by the staff and volunteers, she will forever be a part of our New Hope community!

Looking forward to serving together with all of you in 2019!

With gratitude,  
 Rick Guttersohn, LLMSW





## From Grief to New Hope

230 people attended our From Grief to New Hope eight-week workshops in 2018, including a record 116 in the Fall of 2018. Of the participants who attended, 50% of them had experienced their loss less than six months prior to attending (including 27% three months prior or less). One of our primary goals over the past two years has been to see an increase in the number of people who complete the program. Nearly 70% of all participants COMPLETED the workshop in 2018, a 5% increase from 2017! This is a testament to the increased volunteer training we've been able to provide, as well as the love and compassion invested by our volunteer facilitators, speakers, and support team.



### "One thing I loved..."

- "The facilitators gave me hope and I gained new friendships"
- "The feeling of belonging; like someone cared"
- "Being able to talk comfortably with others who have the same pain"
- "The openness and vulnerability that was available"
- "How safe I was in sharing my grief"

## Moving Forward with Hope

- "I will raise our sons to know you and love you."
- "I choose to honor and remember you by living a life you would be proud of."
- "...to continue the love and care [you] showed everyone."
- "I promise to make you proud of the choices I make..."
- "...become a better communicator to comfort the brokenhearted."



## WORKSHOP IMPACT

- 94%** Better understand their grief
- 84%** Can better communicate their thoughts and feelings
- 82%** Are able to cope with their feelings more effectively
- 89%** Are able to talk about their loved one
- 72%** Are less anxious about upcoming holidays or special days

**93%**

Are HIGHLY likely to recommend this program to others!

## SEMINARS AND SUPPORT

**184** SEMINAR  
ATTENDANCE

**5,179**

total attendance  
in 2018. 100 per  
week!

We helped 184 people through our annual Heartbreak to Healing and Hope for the Holidays seminars, with many inviting family friends to participate or connecting to other programs for ongoing support.

## PEER SUPPORT GROUPS

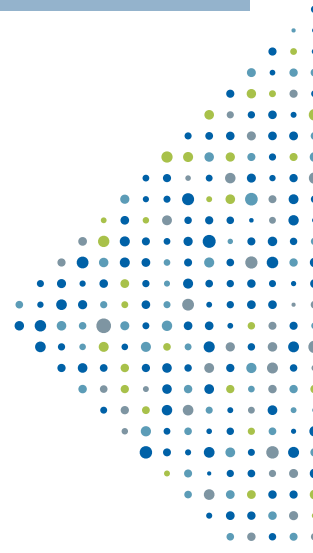
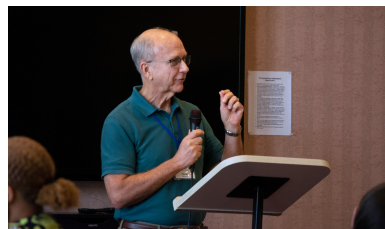
**80** WIDOWS AND WIDOWERS  
HELPED EVERY TWO WEEKS

We saw incredible attendance growth in our Starting Again peer support group for those who've lost a spouse. To help navigate this growth, we launched a second chapter in Novi at Brightmoor church to 2018. It was great to see the volunteer leaders at both groups support each other and share resources. Between the two groups we helped on average almost 80 widows and widowers every two weeks! We also saw tremendous life change occur in our monthly widowers group, weekly suicide support group, and bi-weekly parents of hope support group for those who've lost a child.

## FIRST STEPS

**43** ADULTS **6** KIDS

We helped 43 adults and 6 kids through individual support meetings held at our facility in Northville this year. Many of these individuals were then connected to other programs for ongoing support and education!





## KIDS CAMP

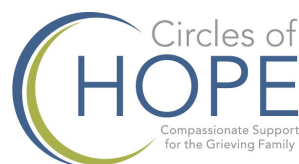
This year New Hope hosted our Summer Kids Camp at Maybury Farm. This was our largest kids camp yet with thirty-five campers in attendance! Our Farm Camp gave kids the opportunity to connect with others their age who have also experienced loss. Volunteers ran many beneficial activities that taught the children coping skills when it came to dealing with loss. Bridgewater Support Services brought in therapy horses for the kids. The campers made their own obstacle courses for the horses. The staff at Maybury Farm conducted guided tours where campers learned about different animals that had also experienced loss. The piglets at the farm lost their mom when they were born. It was amazing to see how the kids we serve were able to connect with these animals.

## CIRCLES OF HOPE WORKSHOP

We helped 36 people (18 adults, 18 kids) through our Circles of Hope workshops in 2018, with 90% of the families completing the six-week program!

## FINDING YOUR SUPERPOWERS FAMILY SEMINAR

We had (8 kids, 7 adults) attend our second annual family seminar, helping them learn about finding courage, strength, compassion, and resilience after loss through the stories of our favorite superhero characters. We also had 10 adults attend an educational breakout to learn more about grief and loss.





## VOLUNTEERS

Our volunteers are the backbone of New Hope's program! We have an active volunteer roster of over 170 people, and celebrated them this May at our 2nd annual Volunteer Appreciation dinner.

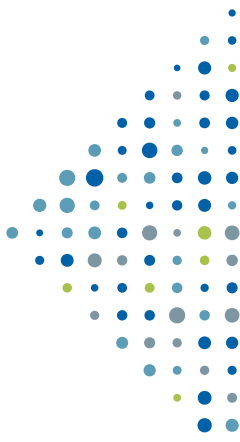
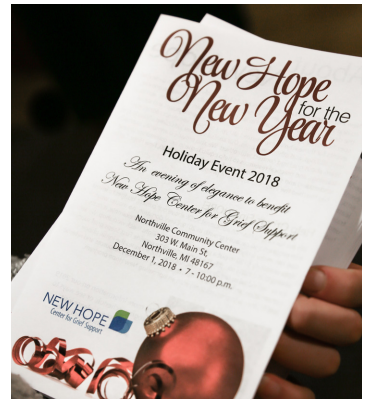


## REACHING OUR COMMUNITY

This past July, Fox 2 Detroit featured New Hope during a live in-studio interview. In total, New Hope reached 669 people through our outreach efforts. This included partnering with Families Against Narcotics (F.A.N.) for Overdose Awareness day, speaking with Oakland County government employees, presenting at Wayne State University's mortuary science department, and other local funeral homes, churches, and community events.

## EVENTS

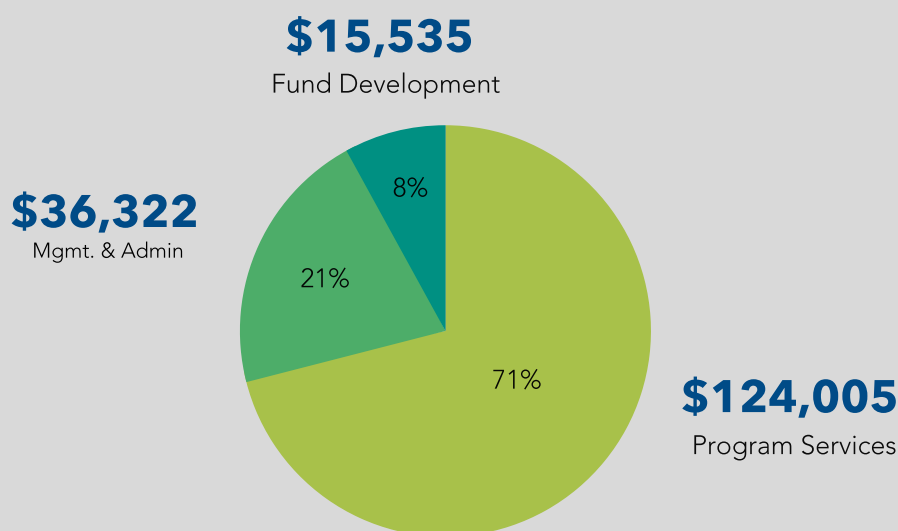
Over 300 people attended our 18th Annual New Hope for the New Year holiday fundraiser at the Northville Community Center. This year's event included a Christmas tree with memorial bulbs, and a special memorial tribute for long time event volunteer, Diane Whitfield. In total, the event raised over \$20,000!



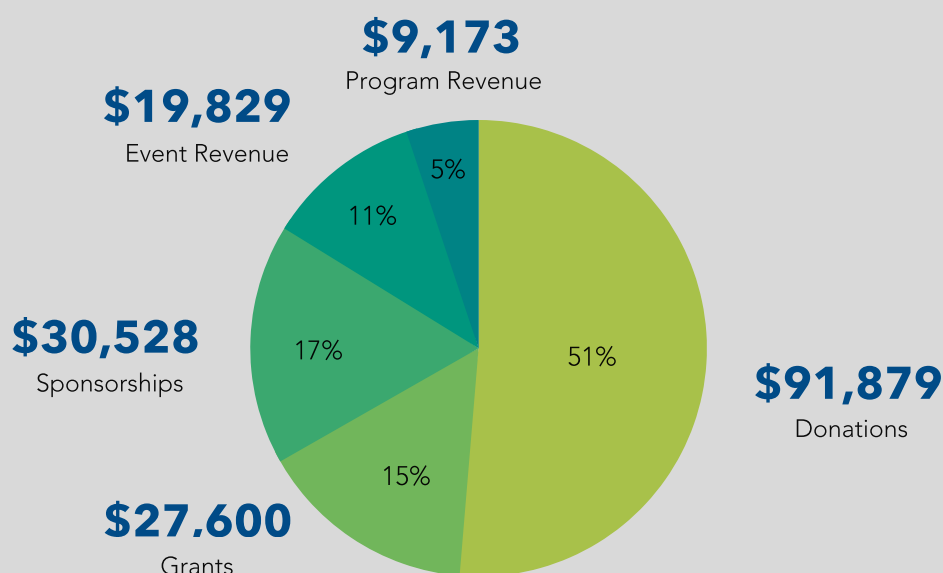
We grew our operating budget by 39% in 2018, with annual expenses coming in at \$175,862. This increase was primarily due to the \$38,582 surplus that was raised in 2017. The increase allowed us to strengthen our programming through additional staff and facility space. We were also able to purchase new computers and software through a \$10,000 capacity building grant received in 2017. This has enabled us to improve our internal systems for participant attendance, program scheduling, and participant follow up. Each of these improvements has permitted us to maximize our time and energy to best serve grieving people. We are committed to wise stewardship of the resources our stakeholders have entrusted us with.

The total revenue raised in 2018 was \$179,009, a 9% increase in revenue from 2017, creating a budget surplus of \$3,147. What's remarkable about this figure was that we exceed our 2018 revenue budget by over \$26,000! We are able to continue to invest in programming capacity growth in 2019. Over 50% of our revenue came from individual donations and volunteer- led "FUN"raisers, which is a testament to our passionate and dedicated donor and volunteer base.

## 2018 EXPENSES \$175,862



## 2018 REVENUE \$179,009





Total amount raised in memory of loved ones: \$27,985.50

## ANGELS OF HOPE

Bill & Margaret Jamieson



Hannah Rose Doody



Robert Damesworth



Karen Rowland Keier



Frank Swierlik



Brenda Kern



Ann Kalec



## IN MEMORY OF:

Betty Affield  
Mike Atlounian  
Dr. Reinhold Badmann  
Robert Barwikowski  
Janet Beagan  
Renee Bellas  
Richard Birrell  
Annabelle Bock  
Van Boll  
Thomas Bondy  
Gary Brda  
Dennis Bryce  
Ken Buchanan  
Tom Carr  
Billy Chambers  
Michael Charleston  
John Chattaway  
Todd Coe  
Al Collins  
Heather Collins  
Linda Cosman  
Bob Damesworth  
Mary Jane Danko  
Kevin Dietrich

Martin Dinsmore  
Hannah Doody  
John Dunckley  
Clancy Ely  
Patty Feerst  
Joseph Frankowski  
Lisa Ann Frankowski  
Stella Frankowski  
Francis Geiger  
Kevin Gilchrist  
Glenn Grace  
Jason Gradinac  
Patricia Guthrie  
Janet Guttersohn  
Jerry Harding  
Glenn G. Hardy  
Mark Harrington  
Danielle Heard  
Becky Hilger  
Margaret Honkala  
Maurice Horger  
David Hull  
Ann Kalec  
Janet Karasin

Linda Kartes  
Gus Kaselemis  
Andrew Kaselemis  
Karen Keier  
Wilma G. Kishell  
Kathleen Kleinert  
Linda Kruger  
Tom Locke  
Mary & Victor Loritz  
Kerry Lott  
Jerome MacDougal  
Maggie Mae  
Mary Marchelletta  
Jason Markley  
Robbie Martinez  
Norm McLeod  
Mark Menning  
Joyce Miller  
Lil Mobley  
Keith Morgan  
Alanna Marie Nagi  
Marie Needham  
Len Nowakowski  
Janet Piestrak

Ron Pilat  
Gary Porter  
Bonnie Reinert  
Colin Rish  
Henry Rotenheber  
Phil Seymour  
Rex Smith  
Cheryl Spence  
Jarrod Steagall  
Kyle Alex Talbot  
Pam Taucher  
Mary Terlecki  
Andrew Venable  
Bob Vesschemoet  
Jacob Villarreal  
Harold Washburn  
Gerald Weichbrodt  
Dave Wert  
Diane Whitfield  
Frank Williams  
Sharon Wright

## IN HONOR OF:

John & Betty Baird, Linda Belleperche, Steve Rowley

*Thank you to our*  
**SUPPORTERS**

We are grateful to the following organizations for supporting our mission to bring  
**Hope, Healing, and New Beginnings**  
 to adults and children grieving the death of a loved one

### SPONSORS



*The*  
**PACKER**  
 GROUP

*Welcome home.*



**PEAK**  
 WEALTH MANAGEMENT



**Kiwanis**  
 Plymouth Foundation

### GRANTORS



**COMMUNITY  
 FINANCIAL**

**right here right for you**



Plymouth Community  
 United Way



EST. 1956



**Doulos  
 Foundation**



### MINISTRY PARTNERS



Ward Church



**BRIGHTMOOR**  
 CHRISTIAN CHURCH



**HILLTOP**  
 CHURCH



**Borek Jennings**  
 FUNERAL HOMES





Recently the board of directors committed ourselves to developing a Five Year plan to serve as a roadmap to guide New Hope's growth in future years. Among the goals we established for ourselves is to triple our impact within the next five years through developing new local programs and expanding programs into two additional communities. Part of our plan is to do this by identifying and engaging past New Hope participants as volunteers in their communities.

In order to do this, we will need your support!

## GET INVOLVED

Our ministry is growing yet there is still need in our community for more high-quality grief support and education...more than we can keep up with. We are seeing increasingly more people reaching out after experiencing a loss from suicide or overdose. We are also seeing people reach out with much more recent and traumatic losses (less than a month after a death). We are hoping to diversify our programming so that everyone can find the help they need and begin their journey towards hope, healing, and new beginnings.

Below are some ways you can help!

### VOLUNTEER

You can help provide compassionate care and peer support to grieving adults and children. Or, you can help behind the scenes through event planning, administrative support, fundraising, or outreach.

[newhopecenter.net/volunteer](http://newhopecenter.net/volunteer)

### DONATE

Consider making a one-time gift, joining our Heroes of Hope monthly donor program, or make a memorial gift in honor of your loved one.

[newhopecenter.net/donate](http://newhopecenter.net/donate)

### SPONSOR

Your business or organization can sponsor a specific program or event, or you can support our ministry through an affinity (annual) sponsorship.

[newhopecenter.net/sponsor](http://newhopecenter.net/sponsor)



New Hope Center for Grief Support  
145 N Center St Suite E  
Northville, MI 48167

**THANK YOU**  
for helping make  
a difference in 2018!



---

[www.newhopecenter.net](http://www.newhopecenter.net)  
[griefhelp@newhopecenter.net](mailto:griefhelp@newhopecenter.net)  
248-348-0115